

## TILTMETERS (electrolytic tilt sensor)

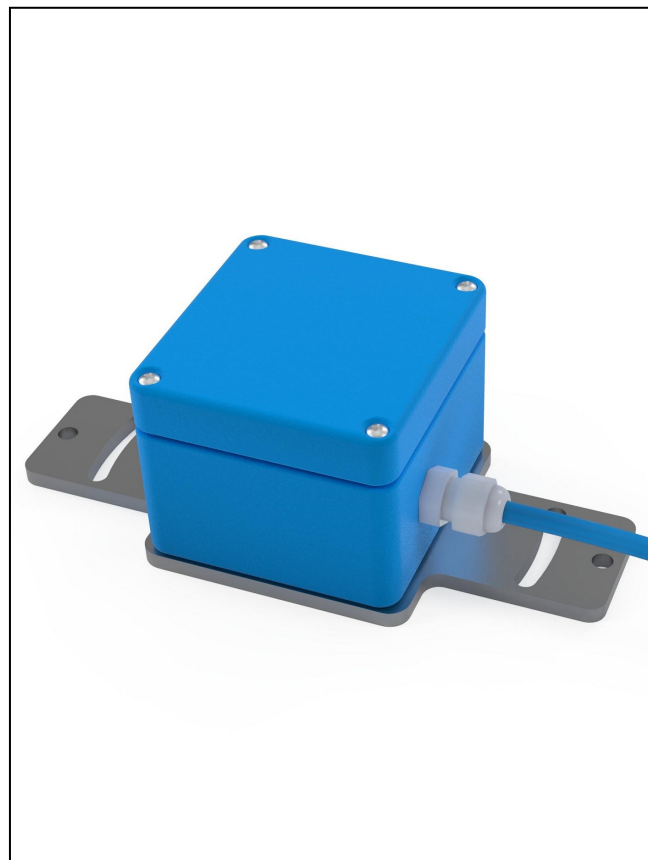
### *Description*

Tiltmeters are used to monitor changes in the inclination of structures, walls, retaining walls, rock masses, and to assess the behavior of bridges or loaded beams. Equipped with an electrolytic high sensitivity inclinometer sensor, this instrument detects the angular variations of the structures with extreme precision and accuracy.

Gestecno also provides the accessories required for mounting on both horizontal and vertical supports.

### *Applications*

- Monitoring of concrete structures, beams and columns
- Historical buildings
- Retaining walls
- Monitoring of steel structures
- Concrete dams
- Wind blades
- Ground subsidence
- Landslides monitoring



### *Features*

- Reliability on long time monitoring
- Precision and resistance
- Degree of protection IP67
- Sturdy construction, also suitable for harsh environments
- Vertical and horizontal installation
- Easy to install

## Technical Specifications

Type of sensor	uniaxial or biaxial electrolytic tilt sensor
Total range	+/- 3°
Linear range	+/- 1°
Linearity (+/- 1°)	<3%
Repeteability	+/- 0.001°
Resolution	+/- 0.0003°
Long term stability	<0.001°
Operating temperature	-20...+50 °C
Power supply	3.3-5.0 Vdc stabilized
Output signal	voltage (from 0 to max 5 V)
Container material	aluminium
Protection class	IP67

## Accessories and spare parts

- Shelf for the installation on vertical walls
- Shelf for the installation on inclined walls
- Cut-to size signal cable

## Please specify

CODE	PRODUCT DESCRIPTION
CLE-101	Uniaxial tiltmeter
CLE-102	Biaxial tiltmeter
CLV-200	Shelf for the installation on vertical walls
CLV-220	Shelf for the installation on inclined walls
CAV-040	4x0.22 cable (please specify the lenght)



## For further information:

### Gestecno s.r.l.

Loc Lanciano, 22 - 62022 Castelraimondo (MC) - Italy  
Tel/fax: (+39) 0737.642174 - P. IVA 01137480438  
e-mail: [info@gestecno.it](mailto:info@gestecno.it) - WEB: [www.gestecno.it](http://www.gestecno.it)